



## Mesh, Tracery, and Pare by Scholten & Baijings

April 2017

[press@maharam.com](mailto:press@maharam.com)

Maharam 251 Park Avenue South NY, NY 10010

800.645.3943 [maharam.com](http://maharam.com)

Mesh, Tracery, and Pare are the third in a series of products designed by Scholten & Baijings in collaboration with Maharam. Reflecting the Dutch duo's intent focus on nuanced color and refined geometric patterning, the new collection diverges from the expansive repeats of Blocks and Grid (2014) and the bold graphics of Bright Grid, Bright Angle, and Bright Cube (2015) in favor of more intimate surfaces that invite further observation.

The concept for Mesh derives from Scholten & Baijings's Strap Chair (2014), which reinterprets 17th-century Dutch cane or woven chairs. Specially developed braided polyester straps are wound around the chair's tubular frame in a striped, light-to-dark arrangement, producing a harmonious combination of hues. Likewise, Mesh's animated surface features a modified checkerboard pattern wherein rectangles of ribbed texture alternate with smooth stacks of compact color punctuated by crisp fluorescent stripes. These critical color accents are evident in the earliest prototypes, in which a checkered pattern was anchored to a foam backing by vivid stitches. In addition to these samples, Scholten & Baijings's studio produced yarn windings as studies for the juxtaposition of solid and composed color.

Their approach to creating Tracery's pattern was similarly three-dimensional. Painted chipboard was notched and wound with four different colored threads: two on the horizontal and vertical axes and two on the bias. This technique was then translated into a woven fabric that reads as solid from afar, but reveals a finely quilted diamond structure when viewed up close. Two high-sheen yarns—one longitudinal, the other on a diagonal—add reflectivity and interest to this small-scale texture. The tonal palette comprises cardinal, pale blue, indigo, sage, graphite, and tints thereof.

Pare, on the other hand, is exceptional as the first solid textile that Maharam created with a collaborator. Again employing their "atelier way of working," Scholten & Baijings developed a unique and original palette by hand-painting strips of canvas, which the textile was then dyed to match. Subtle chromatic variation, first seen in Blocks, is observable in Pare's faintly gridded, pointillist surface, resulting from a dyeing process that employs differing absorption properties of various fibers. With a smooth but dry hand, Pare is a vehicle for neutral and brilliant shades. Its palette of seventeen matte colors includes a range of warm and cool grays, pinks and plum, light and dark denim, coral, lemon, and jade.

Mesh, Tracery, and Pare will debut on the ColourForm Sofa Group, the inaugural collection of furniture designed by Scholten & Baijings for Herman Miller, during the 2017 Salone del Mobile in Milan.

# Mesh, Tracery, and Pare by Scholten & Baijings

## About Scholten & Baijings

Stefan Scholten and Carole Baijings founded the Amsterdam-based Scholten & Baijings, Studio for Design in 2000. Moving fluidly between artisanal and industrial processes, Scholten & Baijings creates products characterized by a minimalist visual language, a keen expertise in color, and seamless symmetrical patterning. Their clients include 1616/Arita Japan, Georg Jensen, BMW Group/ MINI, Established & Sons, Thomas Eyck, HAY, IKEA, Karimoku New Standard, and Moroso, among others. The studio's first monograph, *Reproducing Scholten & Baijings* (2015), was directed by Maharam, published by Phaidon, written by Louise Schouwenberg, and designed by Joost Grootens. It received an ADC Annual Award in 2016.

## About Maharam

Founded in 1902, Maharam offers a comprehensive collection of textiles for commercial and residential interiors. Maharam textiles are available to the trade and at select retail locations in North America and Japan; through its Danish partner Kvadrat in Europe; through Kvadrat Maharam in Australia, Turkey, and the United Arab Emirates; and via a network of distribution throughout the Pacific Rim.

### SPECIFICATIONS

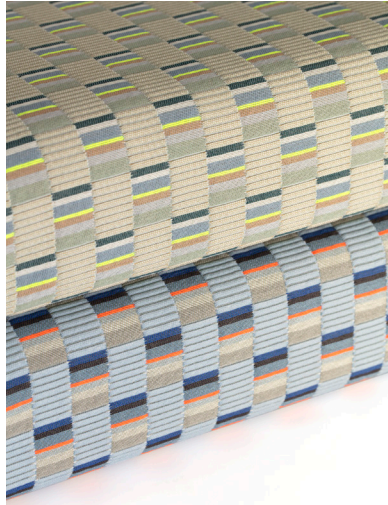
PATTERN	WIDTH	COLORS	CONTENT
Mesh	54" (137cm)	8	64% Cotton, 21% Solution-Dyed Nylon, 14% Post-Consumer Recycled Polyester, 1% Polyester
Tracery	52" (132cm)	11	34% Solution-Dyed Nylon, 26% Wool, 21% Polyester, 19% Cotton
Pare	54" (137cm)	17	52% Wool, 26% Polyester, 22% Nylon

# Mesh, Tracery, and Pare by Scholten & Baijings

## IMAGES AVAILABLE FOR DOWNLOAD

All images are at 300 dpi

Pixelation and striation may appear when digital  
images are printed at unusual percentages



Maharam\_Mesh\_Scholten-Baijings.jpg



Maharam\_Tracery\_Scholten-Baijings.jpg



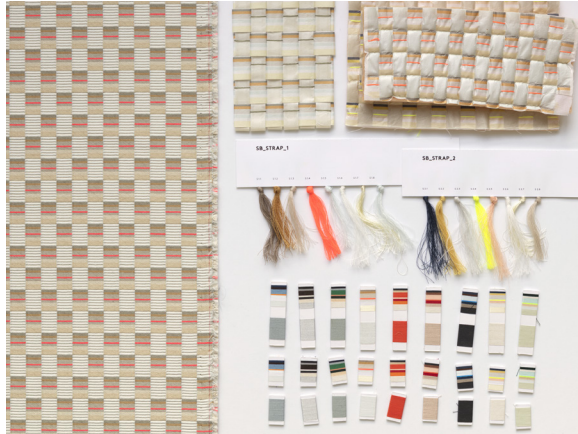
Maharam\_Pare\_Scholten-Baijings.jpg

# Mesh, Tracery, and Pare by Scholten & Baijings

## IMAGES AVAILABLE FOR DOWNLOAD

All images are at 300 dpi

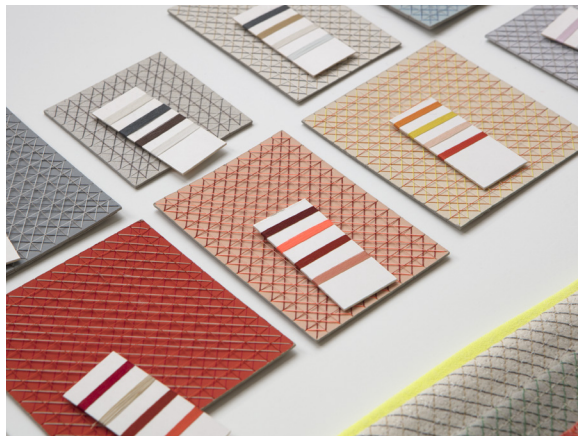
Pixelation and striation may appear when digital  
images are printed at unusual percentages



Maharam\_Mesh\_Process\_Scholten-Baijings\_01.jpg



Maharam\_Mesh\_Process\_Scholten-Baijings\_02.jpg



Maharam\_Tracery\_Process\_Scholten-Baijings.jpg



Maharam\_Pare\_Process\_Scholten-Baijings.jpg