

Albemarle by Paul Smith

March 2018

Maharam introduces Albemarle, the sixteenth woven textile designed by Paul Smith in collaboration with the Maharam Design Studio.

A departure from Smith's signature stripes, Albemarle's overlaid ellipses multiply into a large-scale, sinuous pattern of curving lines and interlocking diamonds. Finely etched into a tightly woven cotton ground, the motif is surrounded by shades of chartreuse, cranberry, olive, or cornflower—thereby infusing elegant geometric repetition with unexpected vibrancy.

Unlike many of Smith's upholstery textiles, Albemarle does not draw from traditional apparel references. Instead, it's based on the bespoke cast-iron façade covering Smith's No. 9 Albemarle Street shop in London. Designed in partnership with 6a Architects, the façade is based on drawings by Smith, translated into high relief, and nods to the Regency style of Georgian architecture found throughout London's Mayfair district. The same ornamental pattern has since been translated into various garments and embossed leather accessories as part of the Paul Smith No. 9 collection, which debuted in September 2015.

About Paul Smith

Paul Smith's ability to combine a flair for eccentric detail with a dedication to the highest standards of craftsmanship has made him among the most successful fashion designers in British history. In business for over forty years, Smith continues to be an integral part of every aspect of the company as both chairman and designer, producing collections sold in over 70 countries worldwide. With an enthusiasm for wide-ranging cultural references and idiosyncratic combinations of pattern and color, applied with understatement, Paul Smith expresses a truly contemporary aesthetic.

For more information, contact press@maharam.com.

Albemarle by Paul Smith

Introduction: March 2018

Content: 37% Solution-Dyed Post-Industrial
Recycled Nylon, 33% Rayon, 30% Cotton

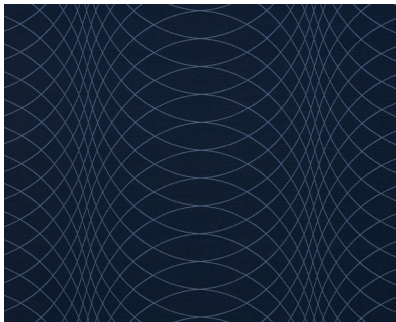
Colors: 9



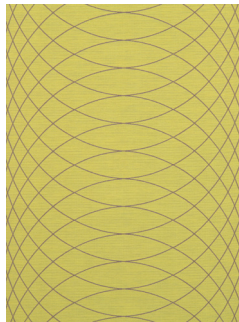
Maharam_Albemarle_Paul-Smith_Stack.jpg



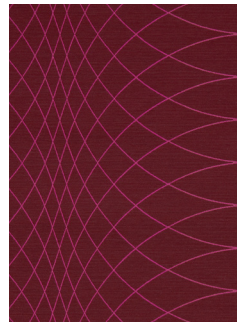
Maharam_Albemarle_Paul-Smith_003_NeoCon-2017.jpg



Maharam_Albemarle_Paul-Smith_006_50-percent.jpg



Maharam_Albemarle_Paul-Smith_003_75-percent.jpg



Maharam_Albemarle_Paul-Smith_007_100-percent.jpg



Maharam_Paul-Smith_Albemarle-Street-Shop-London.jpg