

Spindle and Washi by Hella Jongerius

January 2022

Maharam introduces Spindle and Washi, the latest woven textiles designed by Hella Jongerius in collaboration with the Maharam Design Studio. A continuation of Jongerius's ongoing inquiry into the relationship between craft and industrial techniques, both textiles are based on tangible, handmade objects and enlist exacting constructions to achieve methodical repetitions of texture, pattern, and color.

Spindle's design derives from Jongerius's interest in process and weaving, which was also the subject of her 2021 exhibition *Hella Jongerius: Woven Cosmos* at Berlin's Gropius Bau. Spindle interprets a series of elaborate ropes Jongerius originally made for the exhibition's installation *Cosmic Loom* which represents the universal role of spinning and weaving in cultures worldwide.

The Maharam Design Studio worked closely with Jongerius to capture the handmade ropes' irregular forms in meticulous detail and render them in ten repeating motifs through color and a variety of woven structures. Domestically woven on a jacquard loom, Spindle references Jongerius's earlier explorations of embroidery techniques at industrial scale, as seen in the Layers series (2008), and the textiles Borders (2011) and Flutter (2018). Reflecting Jongerius's unique color sensibility, hues of bright turquoise, bronze, indigo, and brushed orange are complemented by the nuance of heathered wool grounds.

Building on Jongerius's earlier work with ceramic glaze, Washi transposes layers of translucent color to woven form. Jongerius's own collages made from hand-cut colored film were the basis for the design. In translating the artwork to upholstery, the Maharam Design Studio embraced the challenge of creating a variety of tones with a limited selection of yarns. Using intricate blending techniques across both light and dark warps and iterative weft colors, Maharam was able to bring forth a multiplicity of values that add dimension. Highlighting Jongerius's interest in tactility, irregular linen grounds—offered in three light and three dark colors—lend subtle texture in combination with lustrous motifs of earthy brown, copper, olive, iris, grass, and citrus.

Spindle and Washi by Hella Jongerius

About Hella Jongerius

A graduate of Design Academy Eindhoven, Hella Jongerius has been a standout in the world of product design since her early work for Droog, the Dutch design collective. She founded Jongeriuslab in Rotterdam in 1993 and moved to Berlin in 2009. Jongerius's unique approach to craft from the perspective of industry, and her ability to combine these seemingly oppositional methods of production, has allowed her to create individuality on a mass scale. Her work ranges from one-offs and limited editions exhibited at galleries to consumer products available through companies like Vitra, Nymphenburg, Royal Tichelaar Makkum, and IKEA.

Hella Jongerius and Maharam have been collaborating since 2001. Several of the resultant textiles are now in the permanent collections of museums worldwide, including the Art Institute of Chicago; the Cooper Hewitt, Smithsonian Design Museum; the Museum of Modern Art; the Museum Boijmans van Beuningen; and the Stedelijk Museum, among others.

About Maharam

Founded in 1902 in New York, Maharam is a leading creator of textiles for commercial and residential interiors. Recognized for its rigorous and holistic commitment to design, Maharam embraces a range of disciplines from product, graphic, and digital design to art and architecture. Maharam textiles are included in the permanent collections of the Art Institute of Chicago, the Museum of Modern Art, and the Stedelijk Museum, among others. Maharam is the recipient of the Cooper Hewitt, Smithsonian Design Museum Design Patron Award for its longstanding support of art and design.

For more information, contact press@maharam.com.

Spindle and Washi by Hella Jongerius

Spindle

Introduction: January 2022

Content: 46% Wool, 28% Solution-Dyed Nylon,
23% Cotton, 3% Rayon

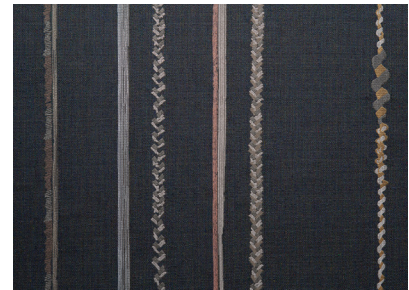
Colors: 6



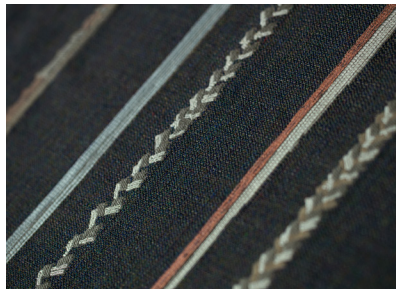
Maharam_Spindle_Hella-Jongerius_001_Dynamic.jpg



Maharam_Spindle_Hella-Jongerius_005.jpg



Maharam_Spindle_Hella-Jongerius_006.jpg



Maharam_Spindle_Hella-Jongerius_006_Dynamic.jpg



Maharam_Spindle_Hella-Jongerius_005_Dynamic.jpg



Maharam_Spindle_Hella-Jongerius_Process_Photo-Credit-Jongeriuslab.jpg

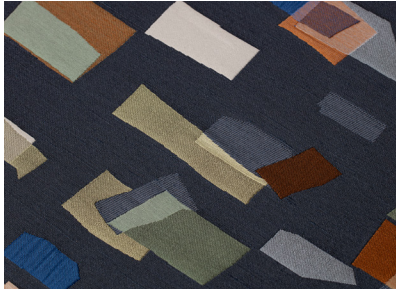
Washi

Introduction: January 2022

Content: 55% Cotton, 22% Solution-Dyed Nylon, 15% Linen,
8% Post-Consumer Recycled Polyester

Colors: 6

Spindle and Washi by Hella Jongerius



Maharam_Washi_Hella-Jongerius_004_Dynamic.jpg



Maharam_Washi_Hella-Jongerius_Stack.jpg



Maharam_Washi_Hella-Jongerius_002.jpg



Maharam_Washi_Hella-Jongerius_Process.jpg