



Industry by Studio Job

June 2014

press@maharam.com

Maharam 251 Park Avenue South NY, NY 10010
800.645.3943 maharam.com

Maharam introduces Industry by Studio Job, a densely woven jacquard offering an ominous iconographic depiction of the rise of the machine age. Industry is the fourth textile Studio Job has designed in collaboration with Maharam, following 2013's Aftermath, Bavaria and Bavaria Stripe.

In 2008, Studio Job released Industry Series, a collection of marquetry furniture featuring ornamental patterns of industrial iconography. In complement to their furniture work, Industry brings a similar satirical approach to textile design. Composed of numerous layered objects including artillery, tools, cranes, and power plants, the icons are stripped down to their elemental form, flattened in grayscale, and enhanced with metallic accents, creating an evocative assemblage of humankind's technological pursuits. The high level of graphic detail is achieved through a fine denier cotton-and-polyester construction.

Formed in 2000 by Design Academy Eindhoven graduates Job Smeets and Nynke Tynagel, Studio Job is an Antwerp and Netherlands-based studio that employs exceptional materials and an uncommonly high level of craftsmanship that challenges modern production techniques. Their distinctive output, often in cast bronze or laser-cut marquetry, is characterized by its uncompromising, ornate execution, while their subject matter ranges from the traditional to the topical in an irreverent blend of iconography drawn from the Middle Ages and current pop culture. Defying categorization as either artists or designers, Studio Job has completed projects for Moooi, Swarovski, Rizzoli, Viktor & Rolf, and Royal Tichelaar Makkum, while collectors and museums covet their one-offs and limited editions. They have shown at leading museums worldwide including the Cooper-Hewitt, National Design Museum (New York), Design Museum (London), Museum of Modern Art (New York), Rijksmuseum (Amsterdam), and the Victoria and Albert Museum (London).

Maharam offers a comprehensive collection of textiles for commercial and residential interiors.

SPECIFICATIONS

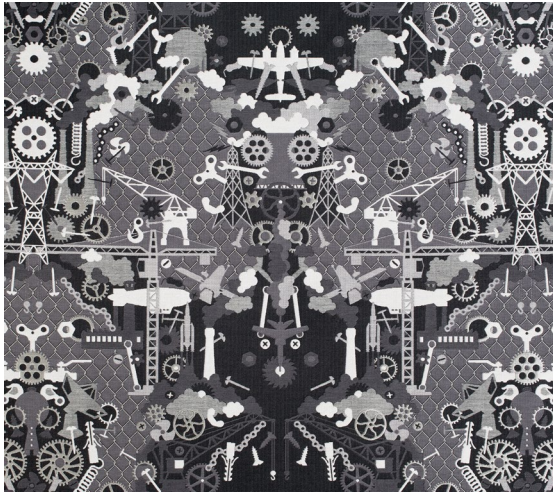
PATTERN	WIDTH	COLORS	CONTENT
Industry by Studio Job	55"/140cm	1	80% Polyester, 20% Cotton

Industry by Studio Job

IMAGES AVAILABLE FOR DOWNLOAD

All images are at 300 dpi

Pixelation and striation may appear when digital images are printed at unusual percentages



Maharam_StudioJob_Industry_001.tif