



Study

December 2014

press@maharam.com
Maharam 251 Park Avenue South NY, NY 10010
800.645.3943 maharam.com

The latest outdoor textile developed by Maharam's in-house design studio, Study offers an expansive accent palette ranging from mustard yellows to cobalt blues and orchids within a neutral grid repeat. Available in five colours, Study is suitable for all seating types, including outdoor applications.

The Maharam Design Studio governs the development of a comprehensive collection of textiles for all interior applications. The studio balances an appreciation of history with a focus on aesthetic and industrial innovation. Initiatives like Textiles of the 20th Century pay homage to iconic designers of the Wiener Werkstätte, Bauhaus, and mid-century modernism, while collaborations with those in the avant-garde—Dutch industrial designer Hella Jongerius, British fashion designer Paul Smith, German industrial designer Konstantin Grcic and others—bring a cross-disciplinary perspective to interior textiles.

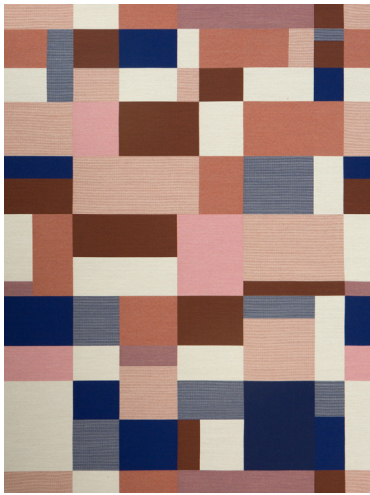
Founded in 1902, Maharam is North America's leading creator of textiles for commercial and residential interiors. Recognized for its rigorous and holistic commitment to design, Maharam embraces a range of disciplines, from product, graphic, and digital design to art and architecture. Maharam textiles are in the permanent collections of the Art Institute of Chicago, the Cooper-Hewitt National Design Museum, the Museum of Modern Art, and the Stedelijk Museum, among others.

Study

IMAGES AVAILABLE FOR DOWNLOAD

All images are at 300 dpi.

Pixelation and striation may appear when digital images are printed at unusual percentages.



Maharam_Study_001.tif