



# Bright Grid, Bright Angle, and Bright Cube by Scholten & Baijings

June 2015

[press@maharam.com](mailto:press@maharam.com)

Maharam 251 Park Avenue South NY, NY 10010  
800.645.3943 [maharam.com](http://maharam.com)

Bright Grid, Bright Angle, and Bright Cube are second in a series of products designed by Scholten & Baijings in collaboration with Maharam. Drawing upon Scholten & Baijings' distinct visual language, the three Bright textiles epitomize the designers' keen sense of color and singular approach to refined geometric patterning.

As with Blocks and Grid (2014), the essence of the Bright grouping lies in the inherent possibilities for combination and variation. With a unified palette of five colors apiece, the three textiles are designed to be used in tandem and to form new geometric relationships when combined. The patterns progress from a basic grid to a more complex formation: Bright Grid offers rigorous simplicity, Bright Angle cascades in an endless rhythm of obliquely bisected rectangles, and Bright Cube achieves layered depth through optical perspective. Rendered in a fluorescent spectrum of specially dyed nylon yarns developed with the Maharam Design Studio's oversight, the patterns effectively map the three-dimensional forms to which they're applied. The subtle textural contrast of lustrous nylon yarns against a matte cotton ground further enhances the sharp geometry and clear color story.

Stefan Scholten and Carole Baijings founded Scholten & Baijings, Studio for Design, in Amsterdam in 2000. They move fluidly between art and design, and artisanal and industrial processes, to create a visually arresting body of work. Among their many clients are 1616 / Arita Japan, BMW Group/MINI, Established & Sons, Thomas Eyck, HAY, IKEA, Georg Jensen, Karimoku New Standard, and Moooi. Both their commissioned and independent work is collected and exhibited worldwide. They were awarded the *ELLE Decoration* International Design Award (EDIDA) for Young Designer Talent in 2011 and have twice been nominated for the *Wallpaper\** Designer of the Year Award (2011/2015). The studio's first monograph, *Reproducing Scholten & Baijings*, published by Phaidon in February 2015, was written by Louise Schouwenberg, designed by Joost Grootens, and directed by Maharam.

Maharam offers a comprehensive collection of textiles for commercial and residential interiors.

## SPECIFICATIONS

PATTERN	WIDTH	COLORS	CONTENT
Bright Grid by Scholten & Baijings	54"	5	40% Cotton, 33% Polyester, 27% Nylon
Bright Angle by Scholten & Baijings	54"	5	40% Cotton, 33% Polyester, 27% Nylon
Bright Cube by Scholten & Baijings	54"	5	40% Cotton, 33% Polyester, 27% Nylon

# Bright Grid, Bright Angle, and Bright Cube by Scholten & Baijings

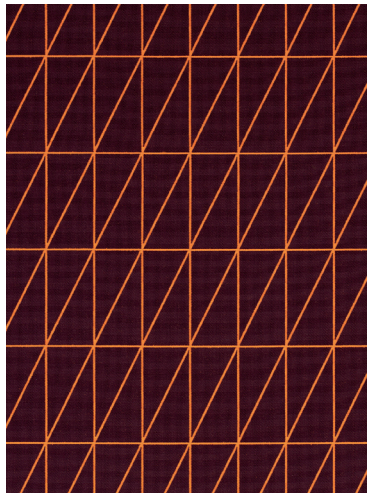
## IMAGES AVAILABLE FOR DOWNLOAD

All images are at 300 dpi

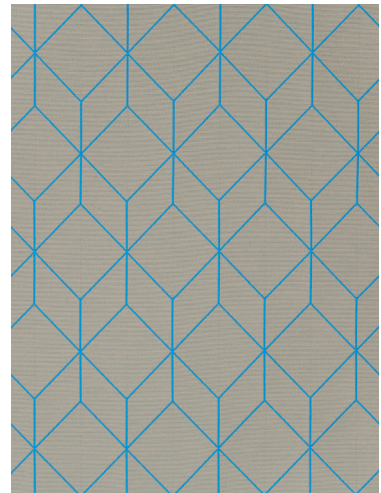
Pixelation and striation may appear when digital  
images are printed at unusual percentages



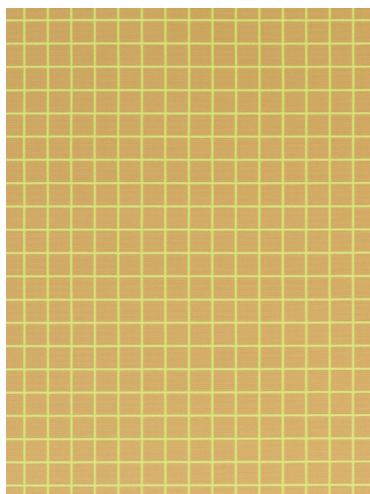
Maharam\_Scholten-Baijings\_Stack.tif



Maharam\_Scholten-Baijings\_  
Bright-Angle\_001.tif



Maharam\_Scholten-Baijings\_  
Bright-Cube\_001.tif



Maharam\_Scholten-Baijings\_  
Bright-Grid\_001.tif